



## Chiltern Gardens

Leighton Buzzard, Bedfordshire, LU7 3BL

£1,395 PCM



  
**WATSONS**  
LETTING SINCE 1961

## Chiltern Gardens

Leighton Buzzard, Bedfordshire, LU7 3BL

Watsons are delighted to offer for let this spacious three bedroom terrace house on the outskirts of Leighton Buzzard. The property has been redecorated and new carpets are to be fitted. The accommodation comprises; Entrance hallway, cloakroom / WC, open plan lounge / diner, kitchen, stairs to first floor, three bedrooms (bedrooms one and two with built-in storage), family bathroom, and enclosed rear garden. The property is offered Unfurnished, and is available late June.

### Entrance Hallway

### Cloakroom / WC

### Open Plan Lounge / Diner

26'10 (max) x 13'5 (max) (8.18m (max) x 4.09m (max))

### Kitchen

9'11 x 9'6 (3.02m x 2.90m )

### Stairs to First Floor

### Bedroom One

13'4 x 9'11 (4.06m x 3.02m)

### Bedroom Two

10'10 x 9'10 (3.30m x 3.00m)

### Bedroom Three

9'8 x 5'11 (2.95m x 1.80m)

### Bathroom

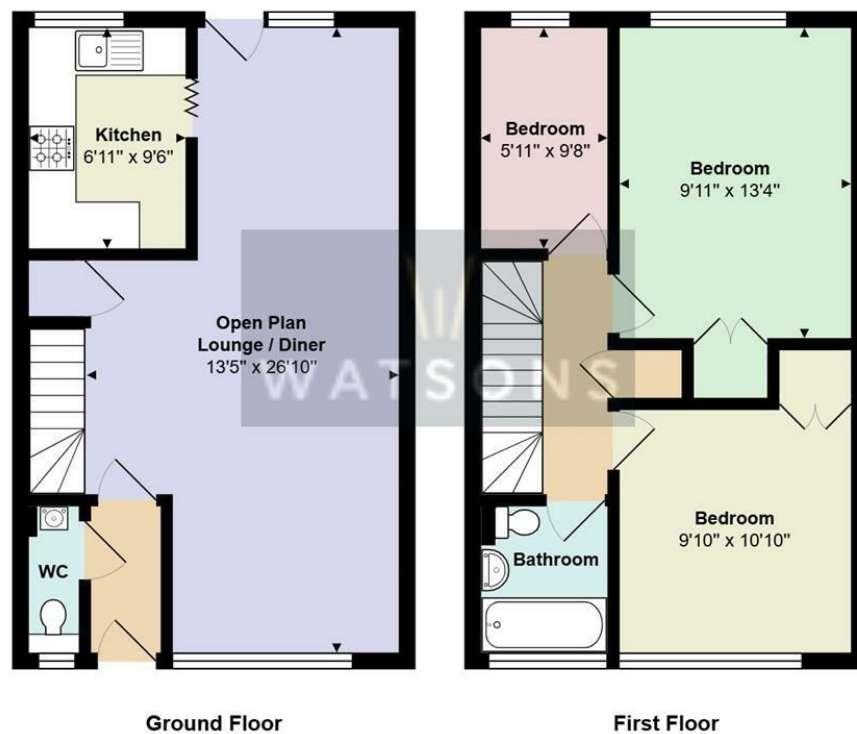
### Rear Garden





Measurements and floor plans are approximate and for guidance only. Any prospective Tenant should check all measurements. Floor plan coverings and fittings are for example only and may not represent the true finish of the property.

## Floor Plan



Total Area: 853 ft<sup>2</sup>

All measurements are approximate and for display purposes only

## Viewing

Please contact our Watsons Lettings Office on 01525 378309 if you wish to arrange a viewing appointment for this property or require further information.

17 - 21 Ropa Court, Leighton Buzzard, Bedfordshire, LU7 1DU  
Tel: 01525 378309 Email: [info@watsonslb.co.uk](mailto:info@watsonslb.co.uk) [www.watsonslb.co.uk](http://www.watsonslb.co.uk)